

TECHNICAL SPECIFICATIONS

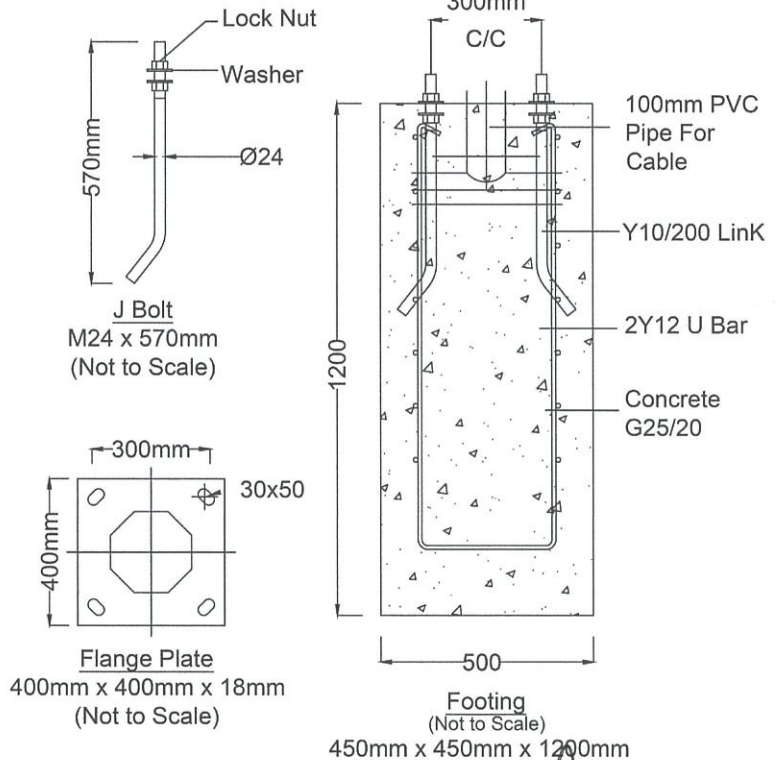
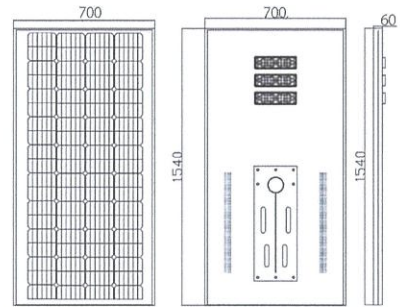
THE DESIGN OF LIGHTING COLUMNS BE DYNAMICALLY PROVED AND VERIFIED BY USING (FINITE ELEMENT ANALYSIS), DESIGNED TO WITHSTAND WIND SPEED OF 35M PER SECOND, TOPOGRAPHY, GROUND ROUGHNESS AND STATISTICAL FACTOR OF 1.0.

- LIGHTING COLUMNS ARE COMPLIANCE TO THE BRITISH LIGHTING COLUMNS SPECIFICATION BS 5649.
- MATERIALS USED FOR LIGHTING COLUMNS ARE COMPLIANCE TO EN 10025 / JIS G3101 SS400
- LIGHTING COLUMNS ARE LONGITUDENALLY SEAM WELDED CONFORM TO BS 6135 BY AUTOMATIC CONTINUOUS METAL INERT GAS (MIG) PROCESS.
- COLUMNS ARE ANTI-CORRODED BY HOT-DIP GALVANIZED, COMPLIANCE TO GALVANIZING STANDARD BS 729 : 1971
- ALL DIMENSIONS ARE IN (mm) ,
- UNLESS OTHERWISE SPECIFIED.

9M NOMINAL MOUNTING HEIGHT



- | | |
|-------------------------|---|
| 1- Lamp Power | : 120W |
| 2- CCT | : 3000-6500K |
| 3- CRI | : >70 |
| 4- Size | : 1540x788x50 mm |
| 5- Light Source | : Sunlight |
| 6- Light Distribution | : xxx |
| 7- Light Efficiency | : 150-175lm |
| 8- IP Rate | : IP66 |
| 9- IK Rate | : IK08 |
| 10- Working Temperature | : -20~60°C |
| 11- Lamp Weight | : 35 - 37kg |
| 12- LED Lifespan | : >50000 hours |
| 13- Controller | : Smart Dimmable Controller |
| 14- Mount Diameter | : 74.37mm |
| 15- Movement Sensor | : 10 metre |
| 16- Solar Panel | : 180W DC18V |
| 17- Battery | : 25.6V 104Ah |
| 18- Autonomy | : Whole night (12Hours),3 days Autonomy |
| 19-Warranty | : 5 Years Warranty |



MBSJ
GEMILANG BERSAMA
Persiaran Perpaduan, Usj 5,
47610 Subang Jaya, Selangor

DRAW NO :	
DATE :	DRAWN BY :
DESIGN BY :	CHKD. BY :
TITLE DWG:	

PROJECT :	
NORSAHIMI BIN PU KHANIPAH	
PENOLONG JURUTERA	
JABATAN KEJURUTERAAN	
MAJLIS BANDARAYA SUBANG JAYA	
19/11/2023	

REV	DATE	DESCRIPTION	BY	CHKD	APPD